

2016-2017

DISCOVERY



Resource Guide

ANNE OF GREEN GABLES



Adapted by Greg Gunning
Music by Richard DeRosa
Based on the Book, *Anne of Green Gables*,
by Lucy Maud Montgomery
Produced by ArtsPower National Touring Company

TUESDAY, APRIL 4, 2017

9:30 AM & 11:30 A.M. • VICTORIA THEATRE

The Frank M. *Catt* FOUNDATION
Discovery

Series

VICTORIA
THEATRE
ASSOCIATION
www.victoriatheatre.com

Welcome to the 2016-2017 Frank M. Tait Foundation Discovery Series at Victoria

Theatre Association. We are very excited to be your education partner in providing professional arts experiences to you and your students!

Published in 1908, *Anne of Green Gables* has become one of the most well-known children's novels set in North America. The subject of countless adaptations into television, motion pictures and stage, L.M. Montgomery's story of an orphan girl finding her way with the Cuthbert family, a new school, and an unfamiliar town has proven inspirational for readers of all ages. I am excited to hear which part of Anne Shirley's journey inspires you!

The information and activities in this resource guide have been carefully crafted to help you and your students explore the many ways a live theatre experience can open up learning opportunities. Grade level icons will help you determine which activities are good for students, too. And don't forget to take advantage of the local resources listed inside to extend the play-going experience and make even more curricular connections for you and your students. Thank you again and welcome!

Gary Minyard
 Vice President -
 Education & Engagement



Curriculum Connections



You will find these icons listed in the resource guide next to the activities that indicate curricular connections. Teachers and parents are encouraged to adapt all of the activities included in an appropriate way for your students' age and abilities. *ANNE OF GREEN GABLES* fulfills the following Ohio Standards and Benchmarks for Grades 2- 6:

OHIO'S NEW LEARNING STANDARDS FOR ENGLISH LANGUAGE:

GRADE 2 – CCSS.ELA-LITERACY.RL.2.1, CCSS.ELA-LITERACY.RL.2.3, CCSS.ELA-LITERACY.RL.2.5, CCSS.ELA-LITERACY.RL.2.7

GRADE 3 – CCSS.ELA-LITERACY.RL.3.1, CCSS.ELA-LITERACY.RL.3.3, CCSS.ELA-LITERACY.RL.3.6

GRADE 4 – CCSS.ELA-LITERACY.RL.4.1, CCSS.ELA-LITERACY.RL.4.2, CCSS.ELA-LITERACY.RL.4.3

GRADE 5 – CCSS.ELA-LITERACY.RL.5.2, CCSS.ELA-LITERACY.RL.5.3, CCSS.ELA-LITERACY.RL.5.5

GRADE 6 – CCSS.ELA-LITERACY.RL.6.2, CCSS.ELA-LITERACY.RL.6.3, CCSS.ELA-LITERACY.RL.6.5

OHIO'S NEW LEARNING STANDARDS FOR MATH:

GRADE 2 – 6 – HISTORICAL THINKING AND SKILLS, HERITAGE, SPATIAL THINKING AND SKILLS, PLACES AND REGIONS

NATIONAL CORE ARTS THEATRE STANDARDS:

GRADE 2 – TH:RE7.1.2, TH:RE8.1.2, TH:CN10.1.2

GRADE 3 – TH:RE7.1.3, TH:RE8.1.3, TH:CN10.1.3

GRADE 4 – TH:RE7.1.4, TH:RE8.1.4, TH:CN10.1.4

GRADE 5 – TH:RE7.1.5, TH:RE8.1.5, TH:CN10.1.5

GRADE 6 – TH:RE7.1.6, TH:RE8.1.6, TH:CN10.1.6

This resource guide was created by Amy Handra & Taylor Benjamin. All activities are available for distribution and use in the classroom or at home.

Table of Contents

COMPREHENSION

About the Play, About the Author & Ohio SpotlightPage 2
 Pre-Show Conversation Starters & Classroom Journal ActivityPage 3
 Important Vocabulary to KnowPage 4

CONNECTION

Adoption and Foster CarePage 5
 Late 1800s and Early 1900s Timeline.....Page 6
 Agriculture Differences Between Price Edward Island and OhioPage 7

CREATIVITY

ANNE OF GREEN GABLES Recipe.....Page 8
 Paper Weaving ActivityPage 9
 Additional Resources for Students and Teachers.....Page 10

About the Play

ANNE OF GREEN GABLES

Matthew Cuthbert and his sister Marilla need a boy to help with all of the chores around their farm on Prince Edward Island. Instead of a boy, they get Anne Shirley, a vivacious orphan with a wild imagination and a breathless fascination to find a place that she can call her own home. Will Green Gables be that place for her? Based on Lucy Maud Montgomery's beloved novels, this heart-warming musical follows Anne on her unlikely journey to find the family and home she's always wanted.

SPOTLIGHT ON LUCY MONTGOMERY



Lucy Maud Montgomery was born, raised, and is buried on Prince Edward Island, Canada. When Maud (who hated the name Lucy) was two years old, her mother died. When she was eight, her father remarried and moved away, leaving her to live with her strict grandparents. She often felt lonely, and she used her imagination to help her feel better. Since young Maud liked to read, she decided to become a writer. She constantly wrote little notes to herself that contained story ideas. In 1904, she came across a note she had written that said: "Elderly couple apply to orphan asylum for a boy. By mistake a girl is sent." After being rejected four times by publishers, *Anne of Green Gables* was finally printed in 1908. It was an immediate success. Since the novel became so popular, the people of Prince Edward Island often call the entire north shore "Anne's Land."

After the success of "Anne," Montgomery continued to write about her and her life. In total, there are nine books in the *Anne of Green Gables* series. During her lifetime, Montgomery published 20 novels, over 500 short stories, an autobiography, and a book of poetry. She died at the age of 67 from coronary thrombosis.

Ohio Spotlight

HALE FARM AND VILLAGE

Have you ever wondered what it was like to live in the 1800's? What do you think it was like living without electricity, television and other electronic devices? If you visit Hale Farm and Village, you can find out!

Hale Farm and Village captures the story of the Hale Family and their 200-year-old family farm nestled in the Cuyahoga Valley in Northern Ohio. As a living history museum of the mid-late 1800s, Hale Farm and Village has demonstrations of various nineteenth-century trades such as candle, broom, and brick making, glass blowing, and a blacksmith shop. It also has farm animals, pastures, gardens, and historic houses with historical interpreters dressed in period costume. Located in Bath, Ohio, visiting Hale Farm and Village is a great way to live how Anne did, if only for a day.

For more information, visit <https://www.wrhs.org/plan-your-visit/hale-farm/>.



Pre-Show Conversation Starters

ENGLISH/
LANGUAGE
ARTS

1. Anne lived in a world before TV, movies, and video games. Can you imagine living in a world with no electricity?! What kind of activities would you do if you did not have electricity? Make a list and share with the class.
2. Anne went to school in a one-room schoolhouse, along with all the other children in her new town. That means that first graders were there, as well as high schoolers. How do you think that would've made school different? Discuss the advantages and challenges to the one-room school house.
3. Green Gables was a big farm with lots of animals and plants. What do you think would be your favorite part of living on a farm—gardening and taking care of the plants or taking care of the animals? Discuss why this would be your favorite.
4. Anne grew up taking care of lots of little kids. Do you have any younger siblings? Cousins? Do you help look after or babysit any neighbors? If so, discuss the ways in which you help care for them.
5. Anne was adopted by the Cuthbert siblings. Do you know anyone that is adopted or is a foster child? As a class, discuss what you know about adoption and foster care.



Classroom Journal Activity

ENGLISH/
LANGUAGE
ARTS

On Prince Edward Island, many of Anne's neighbors were farmers. Other common jobs for the late 1800s included teaching, shop keeping, and blacksmithing. Write a journal entry in which you describe what your parents or guardians do for a living. Then, discuss whether or not those careers would have existed back in the late 1800s. If they didn't exist, why didn't they? What do you think they would have done for work instead?



COMPREHENSION

Important Vocabulary to Know

SOCIAL
STUDIES

ENGLISH/
LANGUAGE
ARTS

All
GRADES

alders (noun): any shrub or tree belonging to the birch family.

catechism (noun): an elementary book containing a summary of the principles of the Christian religion, especially as maintained by a particular church, in the form of questions and answers.

covert (adjective): secret or hidden.

fickle (adjective): liable to sudden or unpredictable change.

gable (noun): the triangular upper part of a wall between the sloping ends of a pitched roof.

rapt (adjective): deeply engrossed or absorbed; transported with emotion.

sorrel (adjective): light reddish-brown.

traversed (verb): to pass or move over, along, or through.



Did You Know?

SOCIAL
STUDIES

Did you know that Canada has two official languages—English and French? 85.6% of Canadians have a working knowledge of English while 30.1% have a working knowledge of French. Many Canadians believe that the relationship between the English and French languages is the central or defining aspect of the Canadian experience. Canada's Official Languages Commissioner, the federal government official charged with monitoring the two languages, has stated, "In the same way that race is at the core of what it means to be American and class is at the core of British experience, I think that language is at the core of Canadian experience."



COMPREHENSION

Adoption and Foster Care

Anne Shirley was **adopted** by Marilla and Matthew Cuthbert. When a child is **adopted**, it means that they legally become the child of someone to whom they were not biologically born. Around 135,000 children are adopted each year in the United States. Some of those kids are adopted by their stepparents, some are adopted out of foster care, and some are adopted from other countries.



The two main types of adoptions in the United States are **closed adoptions** and **open adoptions**.

1. **Closed adoption** – Although not as common as they were in the past, having a **closed adoption** means that the birth parents and the adoptive parents and child do not have any contact with each other after the adoption takes place.
2. **Open adoption** – Having an **open adoption** means that the birth parents and the adoptive parents and child have some contact with each other. It is up to both sets of parents, as well as lawyers, to determine how much time is spent together and how many times per year.

Some adoptions start as **closed adoptions**, but there are ways to have them reopened, depending on the case. Also, in some cases an adoption can become **open** once the child turns 18, if they decide they want to contact their birth parents.

While some children are legally adopted, some are in the foster care system. **Foster care** is a system in which a minor is placed into a group home or place in the private home of a state-certified caregiver, referred to as a **foster parent**. The placement of the child is normally arranged through the government or a social service agency. On any given day in the United States, approximately 415,000 children are in a **foster care** home. Sometimes children are adopted by their foster parents, but many foster children are moved between different foster homes until they age out of the system at 18.

To learn more about adoption and foster care, please visit <http://fostercare.com/> and <https://adoption.com/>.



Write About It!



Do you know anyone who is adopted or in foster care? Write three to five questions that you would like to ask them about their experience. If, like Anne, you were adopted, what do you think might be challenging and what do you think might be rewarding about that experience?



CONNECTION

Late 1800s and Early 1900s Timeline



The main character of *ANNE OF GREEN GABLES*, Anne Shirley, had no television, fast food, or vacations away from home. In 1876, when the first book takes place, the United States of America had only 38 states, and like the Cuthberts, most people in the United States and Canada were farmers. The final book of the *ANNE OF GREEN GABLES* series ends in 1919.

1876 •Alexander Graham Bell invented the telephone.

1888 •The “Kinetoscope” (a “moving picture” machine) is invented by Thomas Edison.

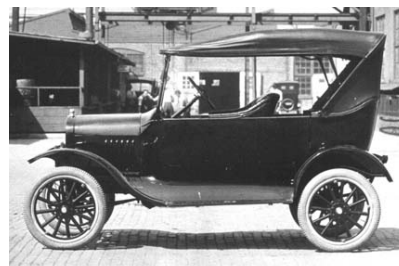
1902 •Toy bears called teddy bears were introduced and named for President Theodore “Teddy” Roosevelt, the 26th President of the United States.

1903 •The Wright brothers make the first airplane capable of controlled flight.

1906 •First electric washing machine is invented.

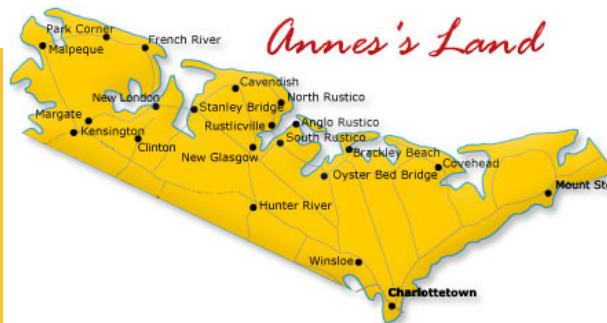
1908 •Ford Motor Company produces the Model T, the first affordable automobile.

1913 •The first crossword puzzle appears in the *New York World*



Did You Know?

ANNE OF GREEN GABLES takes place on Prince Edward Island, one of Canada’s maritime provinces right off the Eastern coast of Nova Scotia and New Brunswick. Because of the popularity of the books and stories, Prince Edward Island is sometimes fondly referred to as “Anne’s Land”. PEI is known for its production of potatoes, soybeans, and blueberries. It is also known for its fisheries, its high tourism rates, and its business within aerospace technology, bioscience and information technology. Because over 30 percent of Prince Edward Island’s electrical needs are taken care of through a combination of provincially and privately owned wind developments, the island is a lead innovator in wind energy.



CONNECTION

Agriculture Differences Between Prince Edward Island and Ohio



Like Ohio, agriculture is a very important way of life for the people living on Prince Edward Island. The island has a total land area of 1.4 million acres with approximately 594,000 acres cleared for agricultural use. In comparison, there are almost 76,000 farms in Ohio and when you combine all of those farms, that is almost 14 million acres of farmland! Below are the top five agricultural products from Prince Edward Island and Ohio.



Prince Edward Island	Ohio
1. Potatoes	1. Soybeans
2. Grain and Oilseeds	2. Corn
3. Fruit - low bush blueberries, cranberries, strawberries and apples	3. Dairy products and milk
4. Beef	4. Hogs
5. Vegetables - cauliflower, carrots, rutabaga and onions	5. Beef

Write About It!



Ask your students why different countries around the world grow different crops and eat different foods. Then, have students research what geographical conditions are needed to grow the top agricultural products in Ohio and on Prince Edward's Island. Last, have students make a chart in which they compare the two areas and the conditions that make their crops grow.



Anne of Green Gables Recipe



In the book, *Anne of Green Gables*, Anne does a lot of cooking (and eating) with Marilla and her best friend Diana Berry. Some of her favorites recipe include Ruby Tea Biscuits, Liniment Cake, Plum Pudding and Diana's favorite . . . Raspberry Cordial! Anne has quite a sweet tooth, doesn't she?

Below is a recipe for one of Anne's favorite treats for you to try at home!

Recipe for Raspberry Cordial

Ingredients:

- 4 pints (48 oz.) raspberries, fresh or frozen
- 1/3 cup fresh lemon juice
- 3 cups sugar
- 12 cups water

Directions:

Step One: Clean and rinse the raspberries, then place them in a very large bowl.

Step Two: Pour the lemon juice over the berries. Use a large spoon to stir the juice into the berries.

Step Three: On the stovetop, heat 12 cups of water and 3 cups of sugar to a boil. Stir till the sugar dissolves. Remove from heat.

Step Four: Pour the boiling water over the raspberries. Allow the water to cool for 1-2 hours to room temperature.

Step Five: Cover the bowl with plastic wrap or a towel that you don't mind staining. Place in the refrigerator to steep for 24 hours.

Step Six: Remove from refrigerator and pour the cordial through a fine mesh sieve to strain.

Step Seven: To serve, mix 1-part cordial with 1-part water or seltzer water. If you prefer a less sweet drink, dilute the cordial to taste. Serve cold.



Paper Weaving Activity



In the late 1800s and early 1900s, a lot of the people who lived out in the country, like Anne and the Cuthberts, made their own clothes and their own linens. Marilla would probably teach a girl of Anne's age how to hand sew and how to quilt. Experienced sewers and quilters can make extremely intricate patterns with their cloth, but it is actually very simple to make a basic pattern.

In the following activity, you will learn how to weave paper.

What You Will Need:

- Two large pieces of construction paper in contrasting colors or patterns
- A pair of scissors
- Adhesive tape

Step One: Take your first piece of paper and fold it in half. Cut the folded paper in half but don't cut all the way through. Leave the last inch or so uncut.

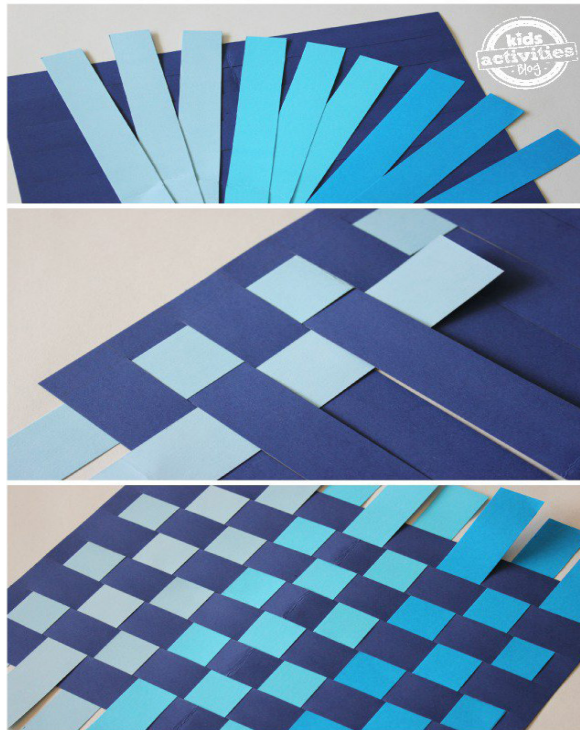
Step Two: Unfold the piece of paper, so you now have a page that has evenly spaced slots for weaving.

Step Three: Take a second piece of paper and cut it in the same way as the first, but this time cut it all the way through so that you are left with eight strips of paper.

Step Four: Weave the strips of paper through the slots in the first piece of paper. To achieve a checkerboard formation, start by weaving the first strip of paper cloth under then over the slots. For the next strip of paper, alternate the pattern. Then, start the second strip by weaving under then over. Repeat until completed.

Step Five: When you have finished weaving, fold the ends of the strips to the back and tape them down with adhesive tape.

Step Six: Hang your paper weaving masterpiece on the wall, use it to cover a recycled jar for storing pencils or turn it into a pretty birthday card.



Resources for Students & Teachers

ADDITIONAL BOOKS BY LUCY MAUD MONTGOMERY:

The Emily Trilogy:

Emily of New Moon (1923)

Emily Climbs (1925)

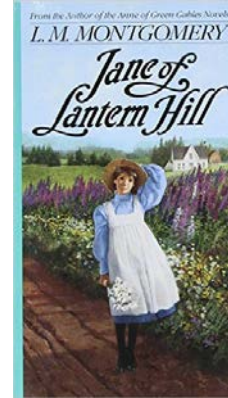
Emily's Quest (1927)

Magic for Marigold (1925)

The Blue Castle (1926)

A Tangled Web (1931)

Jane of Lantern Hill (1937)



PUBLICATIONS FOR TEACHERS AND PARENTS:

Organic Creativity in the Classroom: Teaching to Intuition in Academics and the Arts, Written by Jane Piirto. Prufrock Press: 2013.

Theatre for Change: Education, Social Action, and Therapy, Written by Robert Landy and David T. Montgomery. Palgrave Macmillan: 2012.

Play: How it Shapes the Brain and Invigorates the Soul, Written by Stuart Brown and Christopher Vaughn. Harvard University Press: 2009.

WEBSITES FOR TEACHERS AND STUDENTS:

<http://www.lmmontgomery.ca/>; Click here to learn more about the Lucy Maud Montgomery Institute through the University of Prince Edward Island. This institute is dedicated to researching the life and works of one of Canada's most cherished authors.

<http://www.annemuseum.com/location.php>; Click here to learn about the *Anne of Green Gables* Museum on Prince Edward Island.

<http://www.varsitytutors.com/englishteacher/montgomery>; This website contains links to the *Anne of Green Gables* books, worksheets, craft ideas and more!

Victoria Fuse's Local Resource

Carillon Historical Park

In 1950, Carillon Historical Park's museum complex opened with the purpose of showcasing the region's industrial innovations, transportation achievements, and Dayton's contributions to world progress. Since construction first began on Deeds Carillon in 1940, the dreams of Edith and Edward Deeds have evolved into a beautiful 65-acre campus—designed by the Olmsted Brothers (the famed landscape architects responsible for Central Park)—containing dozens of museum buildings and countless artifacts. The Dayton region's remarkable story continues to inspire visitors from around the world.

For more information, visit <https://www.daytonhistory.org/>.



ADDITIONAL RESOURCES

Brought to you by
VICTORIA THEATRE
ASSOCIATION

138 North Main Street
Dayton, OH 45402



The Education & Engagement programs of Victoria Theatre Association are made possible through the support and commitment of The Frank M. Tait Foundation and the following sponsors and donors whose generosity have opened the door of live theatre to the students of the Miami Valley:

TITLE SPONSOR

The Frank M. Tait Foundation

PROGRAM SPONSORS

The Berry Family Foundation
Steve & Kate Hone
The Kuntz Foundation
Mathile Family Foundation

EDUCATION INITIATIVE SPONSORED BY

Anonymous Gifts

**SUPPORT FOR FUELING EDUCATION IS
GENEROUSLY PROVIDED BY**

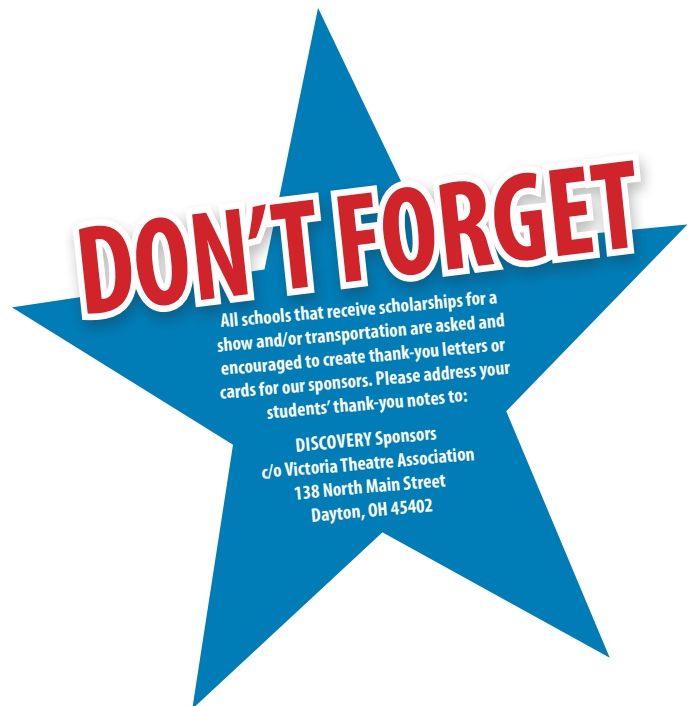
Greater Dayton Regional Transit Authority
The Convenience Stores of Speedway

BROADWAY
EDUCATION PROGRAMS

**BROADWAY STUDIO CAMPS
BACKSTAGE BROADWAY
BROADWAY MASTER CLASSES
BAGELS & BROADWAY
KIDS' NIGHT ON BROADWAY**



ArtsPower National Touring Theatre (Producer), ArtsPower's twofold mission is to provide young people, many for the very first time, with the unforgettable opportunity to experience the transporting power of outstanding theatre that entertains, stimulates, and educates; and to enhance "character education" among young people by creating theatre that fosters sound moral development, encourages self-expression, ignites the desire to read, and advances their development as productive members of society. ArtsPower is one of America's preeminent nonprofit producers and presenters of professional theatre for young and family audiences. With over 750 performances annually, ArtsPower has amassed an audience of more than 12 million people in 47 states.



All schools that receive scholarships for a show and/or transportation are asked and encouraged to create thank-you letters or cards for our sponsors. Please address your students' thank-you notes to:

DISCOVERY Sponsors
c/o Victoria Theatre Association
138 North Main Street
Dayton, OH 45402

