

VICTORIA THEATRE

DAYTON, OHIO

TECHNICAL SUMMARY

This summary is informational. It lists the critical dimensions of the stage and the technical equipment currently in use in the building, as of November 2, 2018. It is intended for general information. If any data is especially critical, call to confirm the information.

THEATRE ADDRESS & MAIN CONTACTS:

Victoria Theatre
138 N. Main Street
Dayton, Ohio 45402
(937) 228-7591 (937) 449-5068 fax
Ty Sutton-President &CEO-ext. 3014 email:ty.sutton@victoriatheatre.com
Patrick Keough – Production Manager/TD - ext. 3073 email:patrick.keough@victoriatheatre.com
Mechele Pritchard - Director of Contracts & Licensing email:mechele.pritchard@victoriatheatre.com
Janice Potter–Asst. Production Manager - ext. 3045 email:janice.potter@victoriatheatre.com
Erin Wimsatt- Production Assistant - ext. 3722 email:erin.wimsatt@victoriatheatre.com
Todd Knopp - House Carpenter - ext. 3046 email:todd.knopp@victoriatheatre.com
Kris Smolinski - House Electrician - ext. 3047 email:kris.smolinski@victoriatheatre.com
Chuck Young - House Sound Man - ext. 3049 email:chuck.young@victoriatheatre.com
Jeff Junker - House Swing Man - ext. 3048 email:jeff.junker@victoriatheatre.com
Wardrobe - ext. 3050 also direct line in (937) 449-2410
House crew may also be reached by calling Backstage: (937) 449-5063

1.0 SUMMARY

TYPE OF THEATRE: Proscenium theatre renovated in 1989 with one balcony, seats 1154, wheel chair accessible

635 seats in the orchestra, 519 in the balcony

STAGE DIMENSIONS: Proscenium width 37'-7"
Proscenium height 29'-0" (24'-0" to bottom of fixed valance)
Stage depth 39'-3" to last working line set

2.0 DRESSING ROOMS

Stage level 1 upstage left seats two
Basement 7 - 4 person, 1- 6 person, 1- 7 person
All dressing rooms have hot and cold running water, costume rack, makeup lights, shower and restroom facilities.
One Wardrobe Room -- (1) washer and dryer (wardrobe personnel must be present)
(8) mobile wardrobe racks
(2) irons
(2) ironing boards

3.0 STAGE RIGGING

74 - Single purchase counterweight sets (Clancy)
Fly rail stage left at stage level or at 29'-0" above stage
Linesets on 6" centers beginning 2'-3" upstage of plaster line
Length of pipes 54'-0"
Minimum trim above stage 4'-0"
Maximum trim above stage 57'-6"
Arbor capacity 1000 lbs.
60 5/8" hemp sheaves available
No dedicated electric linesets
Selectable winch controller with 28 tracking winches. Pickles SR and SL.

4.0 STAGE DIMENSIONS

Proscenium width: 37'-7"
Proscenium height: 29'-0" (24'-0" to bottom of fixed valance)
Apron extends 2'-9" DS of plaster line. Front edge is a straight line.
Thickness of proscenium wall DS of plaster line: 2'-0"
Plaster line to Front Curtain: 1'-0"
Plaster line to back wall obstruction (radiators): 43'-0"
Plaster line to US edge of smoke pocket 0'-6"
Plaster line to last working lineset 39'-3"
Height of grid floor 62'-6"
Total width of stage floor: 83'-6"
Center line to SL obstruction (working rail): 43'-0"
Center line to SR obstruction (Company switches): 40'-6"
Center line to SL fly gallery: 38'-0"
Center line to SR fly gallery: 34'-0"
Clear height under fly galleries: 24'-6"

5.0 STAGE FLOOR

Sprung-wood floor: 3/4" tongue and groove red oak over 2 layers 3/4" a/c ply over Bio-channel isolation. Very resilient.
Flat floor, stained ebony color
Can fasten into with prior permission, arrange in advance
No traps, no floor pockets, no metal in floor surface

6.0 ORCHESTRA PIT

Size of pit: 30'-0" wide 10'-0" front to back at sides, 14'-6" front to back at CL including elevator, DS edge is curved
Size of elevator: 30'-0" wide, 3'-6" front to back at sides, 6'-6" front to back at CL, DS edge is curved
Size of fixed floor: 7'-6" x 30'-0"
Depth from stage floor: approximately 9'-2"
Number of electrical outlets: 10 on US wall (4 - 20 amp circuits)
Number of musician's chairs: 20
Number of music stands: 20
Number of stands lights: 20
Conductor's podium: 2' x 2' x 2' tall, 1'-0" tall if desired

7.0 LOADING DOOR

Location: On First Street (one way street running West to East) 1/2 block east of Main Street
Truck access: Trucks parallel park on street near loading door. Sidewalk between street and door is approximately 20'-0" across.
Door width: 8'-7"
Door height: 10'-9"
Height from sidewalk: 2'-0" (VTA HAS RAMPS TO TRAVERSE SIDEWALK TO DOOR)
Height from stage floor: flush to stage floor

8.0 STAGE DOOR

Location: On Main Street just south of (to the right) of main Theatre entrance.
Backstage Right phone number: (937) 449-5063

9.0 CROSSOVER

At stage level against backwall
In basement, dressing room corridor

10.0 HOUSE DRAPERIES

Act Curtain: Dark Forest Green Velour, guillotine only, operates SR, 1'-0" US of PL

5 - pairs Black Velour legs, 11'-0" wide 30' tall, no fullness

5 - Black Velour borders 12'- 0" deep 54'-0" wide, no fullness

2 - full stage Black Velour drops (4- 30' x 30' panels) for two 54' w x 30' h drops with a 3' overlap at center

1 - 30' tall x 54' wide plastic cyc, translucent grey. Suitable as a rear projection surface.

1 - 30' tall x 54' wide natural muslin bounce drop seamless

1 - 30' tall x 54' wide black sharkstooth scrim

1 - 30' tall x 54' wide lightweight black out drop (2 pieces)

ADDITIONAL VTA STAGE DRAPERIES

2 pairs Black velour legs 10' wide x 28' tall, no fullness (**DIFFERENT DYE LOT**, use last)

2 Black velour borders 10' deep x 50' wide, no fullness (**DIFFERENT DYE LOT**, use last)

11.0 STAGE EQUIPMENT

Step ladders: (2) 4'; (2) 6'; (2) 8'; (2) 12';

(1) 30' JLG 30AM lift; Battery power AC capable platform to 30' working height

(4) 24" x 36" furniture dollies

(1) 16' ramp

(2) 2'-8" x 7'-0" marley

(1) 5'-3" x 34'-6" marley

(1) 5'-3" x 52'-8" marley

(2) 5'-3" x 53'-0" marley

(1) 5'-3" x 53'-8" marley

(1) 5'-3" x 32'-6" marley – slightly different

12.0 STORAGE

Storage of crates: Limited storage onstage or in basement via orchestra pit lift

13.0 ELECTRIC POWER

Company Switch: 3 services, each 3 phase 120/240V 400 amps per leg

Location: SR wall at stage level

Other onstage power available; DSR, USR, USL & DSL 3 phase 120/240V 100-amp receptacles (HUBBELL 520R9W (pin and sleeve)

In each corner of stage, power panel with (6) - 20a 120V 2p&g receptacles, (3) - 20a 120V u-ground receptacles and (1)-20a 120/240V Hubbell 5100R9W (pin and sleeve)

Downstage left, (1) service 3 phase 120/240V 100 amps per leg (sound).

14.0 STAGE LIGHTING EQUIPMENT

Four positions front of house with equipment provided and DMX data line run to each position

(CANNOT BE ALTERED)

Projection booth can also be used as followspot booth.

Followspot Booth 2 - Strong Model # 83070/2 1.6kw Xenon Super Trouper Followspots

Back of Balcony (Bastard Beam) 24 - ETC-S4 10 degree

Mid-ceiling slot 24 - ETC-S4 10 degree

Stage Left Box Boom 14 - ETC-S4 19 degree

Stage Right Box Boom 14 - ETC-S4 19 degree

Balcony Rail 14 - ETC-S4 26 degree

Balcony Rail 2 - Strand #3480 8" Fresnels, 1000w BVT; new 1990 (Curtain Warmers)

Balcony Rail 2 - Strand #2205 zoom lekos; new 1990 (Signer Lights)

Vertical

Throw distance

Angle

To Plaster line

Spotlight Booth 83'-0"

Back of Balcony 29.5 degree

82'-0"

Mid-ceiling slot	55 degree	58'-0"
Stage Left Box Boom	22 degree	55'-0"
Stage Right Box Boom	22 degree	55'-0"
Balcony Rail	--- ---	31'-1"

Onstage lighting positions, fixtures, no permanently designated equipment or Electrics

Onstage capability:

- 240 10 amp circuits in 40 socapex multi-cables
- 48 20 amp circuits in 8 socapex multi-cables
- All circuiting comes down from above, no floor pockets.

Stage Lighting Control:

- (384) 1.2kw LMI L86 dimmers
- (48) 2.4kw LMI L86 dimmers
- (1) ETC Expression III Control console, 1200 channels, DMX 512 output, with 2 color monitors
- (1) ETC RFU (wired) for Expression III Console
- (1) ETC 1 input / 5 output DMX optically isolated splitter
- (2) Remote console color monitors for designer (monochrome)

Equipment that is readily available includes: (Does Not Include FOH Instruments)

- (120) ETC – S4 bodies
- (24) 19 degree, lens tubes
- (36) 26 degree lens tubes
- (96) 36 degree lens tubes
- (12) 50 degree lens tubes
- (36) L&E Par 64 cans; FFR (medium) or FFS (wide) lamps; new 1990
- (12) L&E 9-lite, 3-circuit cyclights; 650w EWF lamps; new 1990

15.0 HOUSE LIGHTING

House Light Control: Projection Booth, DSR, FOH
 Four Scene preset

16.0 SOUND EQUIPMENT

Hearing Impaired:

Sennheiser SI 101S-Infrared Unit

Sound Control Positions:

House mix Stage right orchestra floor behind last row of seating
 Onstage Downstage right
 Orchestra Pit Stage right
 Cable run from FOH to backstage: 250'

Substitute Sound Platforms measure:

42" high x 4' front to back x 44" wide – please notify Production if these will be used

House Sound Equipment Inventory

Dressing room feed includes:

Audio patch bay with patch cables

- (1) 6x1 audio mixer, Altec 1699A (used exclusively for dressing room page)

Items in racks usually located DSL:

- (2) Crown Macrotech 2400 amplifiers
- (2) Crown Macrotech 2402 amplifiers (monitors)
- (5) Crown Macrotech 1200 amplifiers
- (1) Mini Drive BSS FDS-334T
- (1) BSS FDS388 Omni-drive system controller (for proscenium PA and subwoofers)

Permanent Speakers:

- | | |
|---|---|
| Mounted under proscenium arch: | (3) Eaw KF-650 in a ctr. cluster array |
| Portable placed SR and SL of proscenium arch: | (4) Eaw KF 695 main PA cabinets |
| Under balcony: | (4) Eaw JF 80 under-hung on Balcony rail, |
| Near Orchestra fill: | (4) Eaw JF-80 speaker @ DS edge |
| Sub woofer system (under SR and SL stacks): | (2) Eaw SB 250 speakers |

Misc. Equipment:

- (12) Sennheiser ew100 G3 Wireless System w/Lavaliere packs/mics
- (12) Shure U4D Wireless System
 - (2) SM-58 capsule with transmitter
 - (9) Lavalier packs w/mics
- (1) Yamaha M7CL digital console
- (1) Yamaha PM-3500-40C mixing console (backup to Yamaha M7CL) additional costs – please inquire
- (1) Midas Venice 160 16 x 8 mixing console (depending upon availability)
- (1) Denon CD/Tape deck with remote
- (1) Panasonic 3700 - DAT machine
- (1) Tascam Model 122-MKII cassette tape deck
- (2) DBX 166 compressor/limiters
- (1) Yamaha SPX 990, digital effects processors
- (1) Klark Teknik 3600 programmable house Eq system (2 channels) Remote capable
- (1) Klark-Teknik DN360 Dual Eq (monitors)
- (1) Klark-Teknik DN360 Dual Eq (fills)
- (2) 30' 16 x 4, 20 pair snakes with plug boxes all XLR (16 female, 4 male per box)
- (2) 50' 16 x 4 20 pair breakout snakes all XLR (16 female, 4 male)
- (1) 50' 8 pair tails to tails interconnect cable all XLR
- (1) 12' interconnection cable with 16 balanced 1/4" TRS male phone plugs each end, 2 female XLR to 2 male XLR connectors, @ male XLR to @ female XLR connectors
- (2) 50' speaker cables with 1/4" phone plug on each end
- (2) 30' mic cables XLR both ends
- (15) 25' mic cables XLR both ends
- (2) 20' mic cables XLR both ends
- (1) EV RE-20 microphone w/clip
- (6) SM 58's
- (2) SM 81's
- (7) Shure SM-57-LC microphones w/clips
- (3) Crown, PCC-160 microphones (black finish)
- (2) Shure SM 98 (condenser type) microphones
- (12) AKG KM-211/2 black microphone stands
- (12) AKG KM-211/2 black microphone boom arms
- (4) EAW JF-80 speaker for use as monitors
- (6) EAW SM129zi monitors
- (4) Pro-Co direct boxes
- (1) Countryman direct box
- (1) PC DI



Note the placement of our house PA downstage of the proscenium. There are no points FOH.

Communications Equipment

ALL VTA EQUIPMENT

Intercom: Clear Com A-B base station with

- (4) biscuits
- (5) beltacks with headsets
- (2) wireless headsets w/ basestation

Ample receptacles throughout theatre

Stage cue light system from stage manager console, 2 circuit and orchestra pit, double lamp system

Page system from Stage Right stage manager's position to all dressing rooms and orchestra room.

Hearing impaired system (Sennheiser), ample headset units available

17.0 HOUSE PROPERTIES

- (4) prop tables 6'
- (30) metal folding chairs
- (4) metal stools
- (6) black wood stools
- (3) natural wood stools
- (1) podium
- (1) mop bucket w/ wringer
- (2) mops
- (3) push brooms

18.0 APRON SHELF

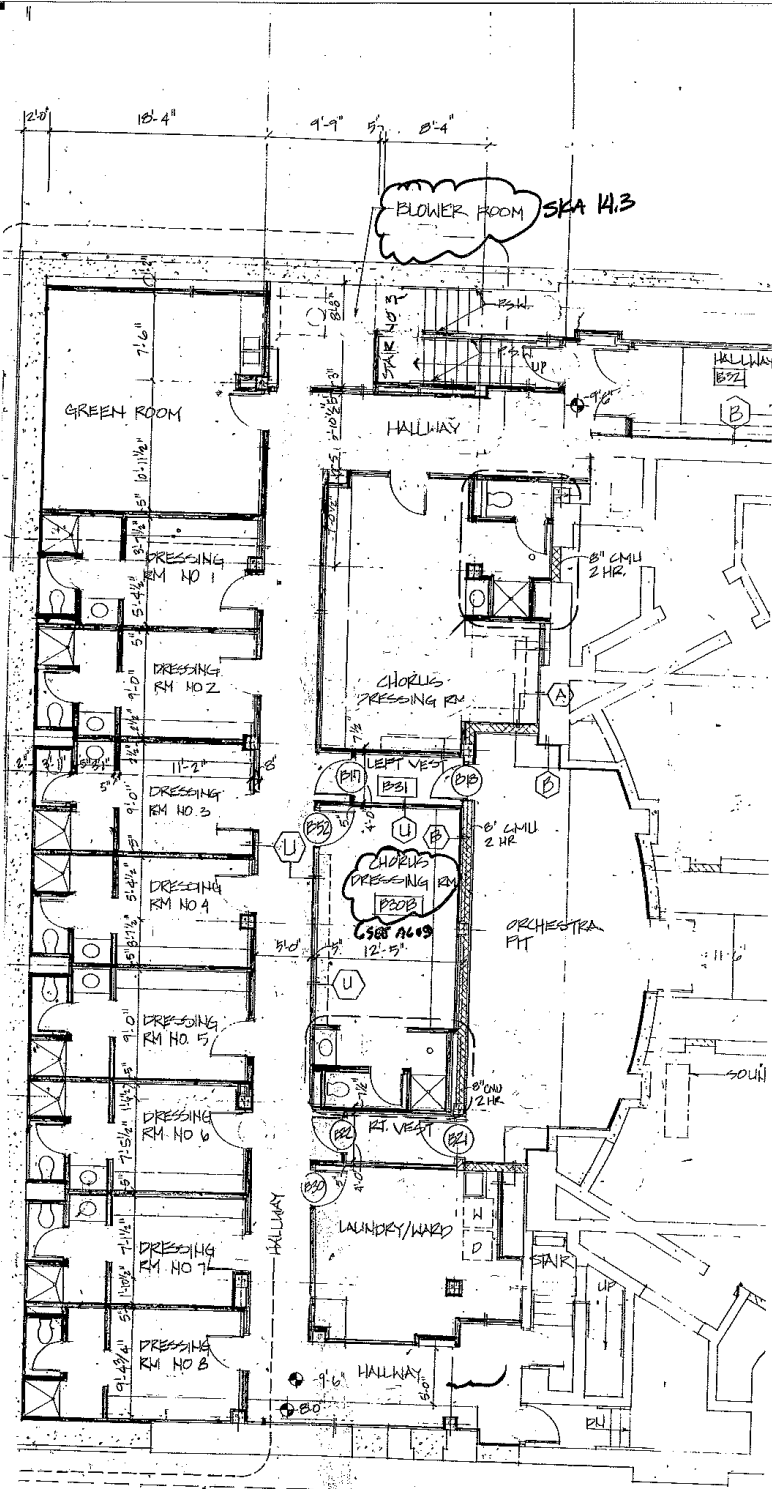
(1) shelf that extends past the apron, used to disguise front fills, monitors, strip lights, etc. This is to provide our patrons with the best view possible. Please discuss prior to load in with venue Production as to policy.

19.0 HANGING PLOT (House Hang is not permanent, if changed it must be restored)

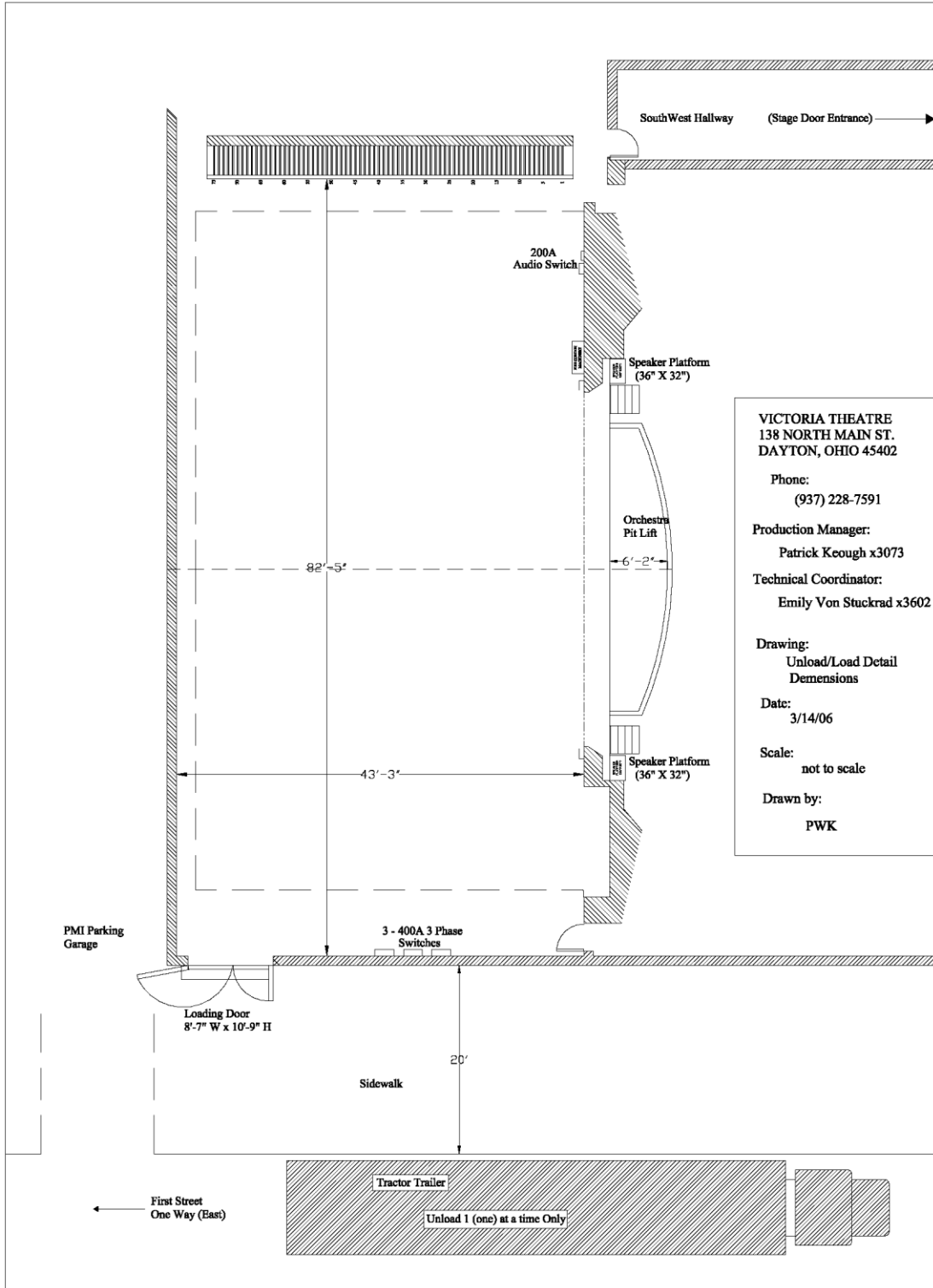
LINE	DISTANCE FROM PL	HOUSE HANG	LINE	SHOW HANG
1	2'-3"	Black Border #1	1	
2	2'-9"	Black Legs #1	2	
3	3'-3"		3	
4	3'-9"	House Elec. #1	4	
5	4'-3"		5	
6	4'-9"		6	
7	5'-3"		7	
8	5'-9"		8	
9	6'-3"		9	
10	6'-9"		10	
11	7'-3"		11	
12	7'-9"	Movie Sheet	12	
13	8'-3"	Black Border #2	13	
14	8'-9"	Black Legs #2	14	
15	9'-3"		15	
16	9'-9"	House Elec. #2	16	
17	10'-3"		17	
18	10'-9"		18	
19	11'-3"		19	
20	11'-9"		20	
21	12'-3"		21	
22	12'-9"		22	
23	13'-3"		23	
24	13'-9"		24	
25	14'-3"	Black Border #3	25	
26	14'-9"	Black Legs #3	26	
27	15'-3"		27	
28	15'-9"	House Elec. #3	28	
29	16'-3"		29	
30	16'-9"		30	
31	17'-3"		31	
32	17'-9"		32	
33	18'-3"		33	
34	18'-9"		34	
35	19'-3"	Light Weight BO	35	
36	19'-9"		36	
37	20'-3"	Black Border #4	37	
38	20'-9"	Black Legs #4	38	
39	21'-3"		39	
40	21'-9"	House Elec. #4	40	
41	22'-3"		41	
42	22'-9"		42	
43	23'-3"		43	
44	23'-9"		44	
45	24'-3"		45	
46	24'-9"		46	
47	25'-3"		47	

LINE	DISTANCE FROM PL	HOUSE HANG	LINE	SHOW HANG
48	25'-9"		48	
49	26'-3"	Black Border #5	49	
50	26'-9"	Black Legs #5	50	
51	27'-3"		51	
52	27'-9"	Blackout Drop	52	
53	28'-3"		53	
54	28'-9"		54	
55	29'-3"		55	
56	29'-9"		56	
57	30'-3"		57	
58	30'-9"		58	
59	31'-3"		59	
60	31'-9"	Black Border	60	
61	32'-3"	Black Legs	61	
62	32'-9"		62	
63	33'-3"		63	
64	33'-9"	Plastic Cyc	64	
65	34'-3"		65	
66	34'-9"		66	
67	35'-3"		67	
68	35'-9"		68	
69	36'-3"		69	
70	36'-9"	Black Border	70	
71	37'-3"	Black Legs	71	
72	37'-9"		72	
73	38'-3"		73	
74	38'-6"	Bounce	74	
75	39'-3"	Blackout Drop	75	

NOTE: Not necessarily in these positions at all times.



SHEET IS UPDATED THRU SKA-24.1



VICTORIA THEATRE
 138 NORTH MAIN ST.
 DAYTON, OHIO 45402

Phone:
 (937) 228-7591

Production Manager:
 Patrick Keough x3073

Technical Coordinator:
 Emily Von Stuckrad x3602

Drawing:
 Unload/Load Detail
 Demensions

Date:
 3/14/06

Scale:
 not to scale

Drawn by:
 PWK